

72mm CENTRE CYLINDER MORTICE LOCKS INSTALLATION TEMPLATE



ASSA ABLOY
Distributed by:
UNION
School Street, Willenhall,
West Midlands,
United Kingdom WV13 3PW
www.uniononline.co.uk

PLEASE READ INSTRUCTIONS CAREFULLY BEFORE BEGINNING INSTALLATION

UNION HD72 SERIES COMMERCIAL 72MM LOCKCASE

Door preparation for the lock

Check the door gap between the leading edge of the door and the frame when in the closed position. For optimum performance this should not exceed the recommended door gap of 3mm. Excessive door gaps can compromise the fire integrity and security of the door.

Cut the template along the dotted line and position on the door at the desired height using the dotted lines as a guide.

HD72SL sashlock

- Mark the positions for the cylinder C and the corresponding fixing holes for bolt through fixing if being used, position X.
- Mark the positions of the lever handle fixing hole B and the corresponding fixing holes for cylinder escutcheons if required, position Y.
- Drill an 18mm dia spindle hole through the door (B)
- Drill two 20mm dia holes for the cylinder (C)

HD72DL deadlock

- Mark the positions for the cylinder C and the corresponding fixing holes for cylinder escutcheons if required, position X. Drill two 20mm dia holes for the cylinder (C)

HD72LA latch

- Mark the positions of the lever handle fixing hole B and the corresponding fixing holes for bolt through fixing if being used, position Y.
- Drill an 18mm dia spindle hole through the door (B)

HD72DNL deadlocking nightlatch

- Mark the positions of the lever handle fixing hole B and the corresponding fixing holes for bolt through fixing. Note: only mark where the handle is being used on the inside of the door.
- *If bolt through fixings are being used please ensure they are protected with a finger plate or blind escutcheon on the outside.*
- Mark the positions for the cylinder C and the corresponding fixing holes for cylinder escutcheons if required, position X.
- Drill an 18mm dia spindle hole through the door (B)
- Drill two 20mm dia holes for the cylinder (C)

HD72ESL escape lock

- Mark the positions of the lever handle fixing hole B and the corresponding fixing holes for bolt through fixing* if being used, position Y.
- Mark the positions for the cylinder C and the corresponding fixing holes for cylinder escutcheons if required, position X.
- *please note for the HD72ESL bolt through fixings and sprung door furniture must be used.*
- Drill an 18mm dia spindle hole through the door (B)
- Drill two 20mm dia holes for the cylinder (C)

HD72WC bathroom lock

- Mark the positions of the lever handle fixing hole B and the corresponding fixing holes for bolt through fixing if being used, position Y.
- Mark position H for the bathroom spindle and the corresponding fixing holes for cylinder escutcheons if required, position Z.
- Drill an 18mm dia spindle hole through the door (B)
- Drill one 20mm dia hole through the door for the bathroom spindle (H)

The Mortise - all locks

Using the template on the door edge as a guide, drill a series of 18mm holes 92mm deep and chisel out to create a mortise to accept lockcase. To ensure the correct depth of mortise is cut out mark the drill bit at 92mm as a visual aid.

Insert the lock into the mortise without forcing it.

Mark round the lock with the outer faceplate in position. Remove the lock and carefully create a recess 4mm deep.

The lock must sit flush with the edge of the door when the outer faceplate is fitted.

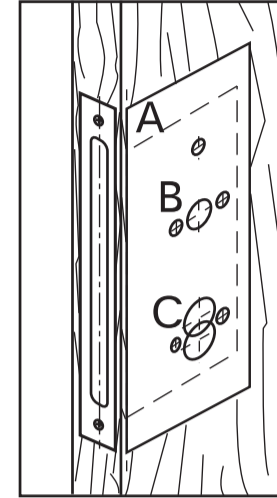


FIG 1

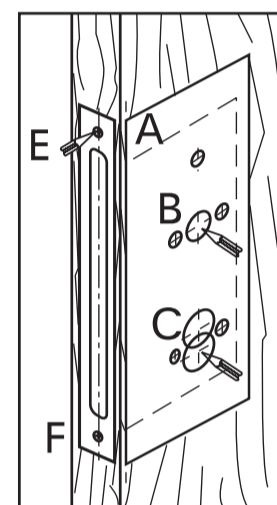
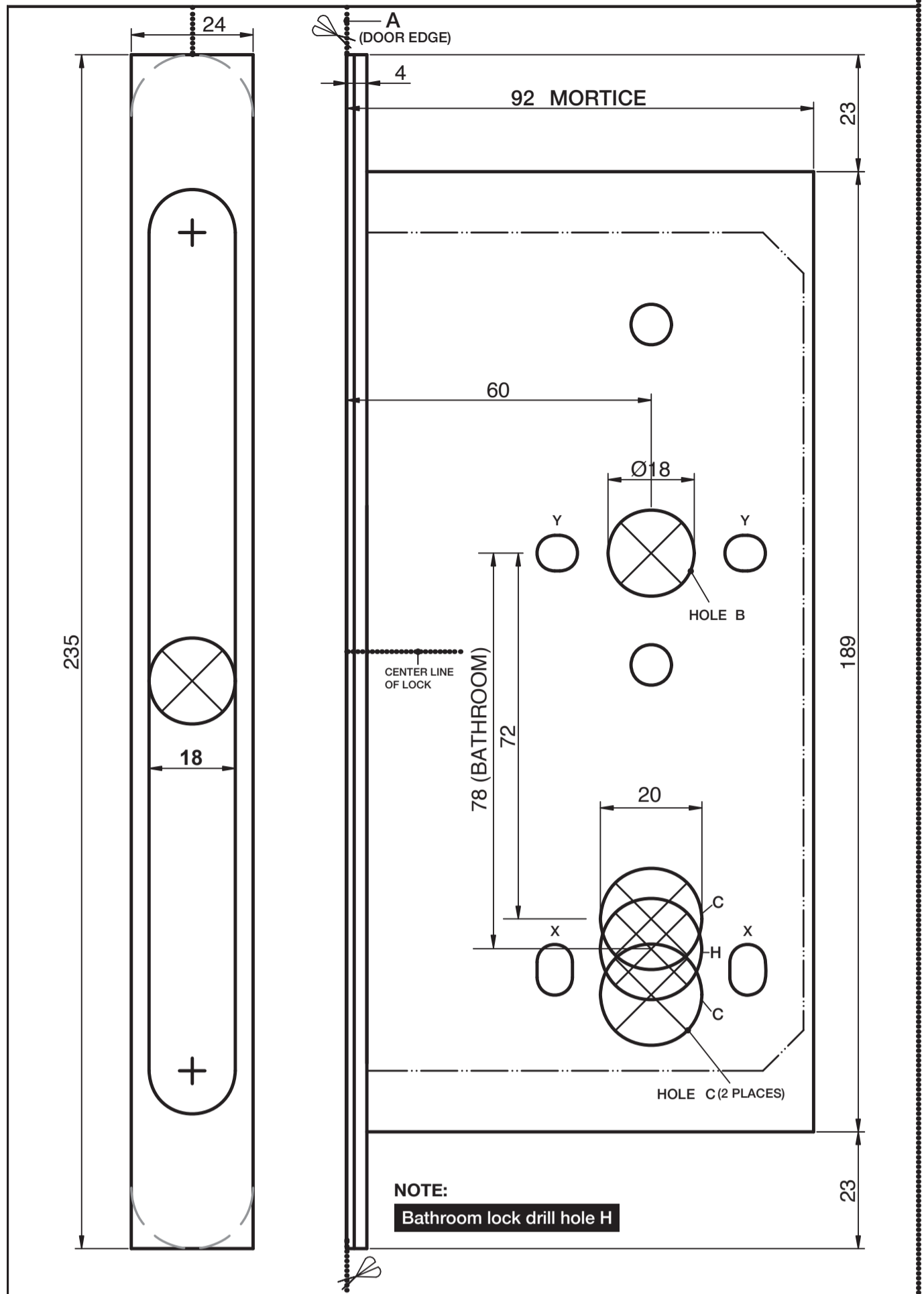


FIG 2



TEMPLATE NO: HD72 72mm

Handling the latch and split follower

Before installing the lock determine the latch direction (HD72SL, HD72LA, HD72DNL, HD72ESL and HD72WC) according to the door handing as shown in Fig 3

To reverse the latch, pull the snib on the top of the lock in an upwards direction, this will release the latch and allow the latch direction to be reversed. Depress the latch into position. Please do not open the lockcase.

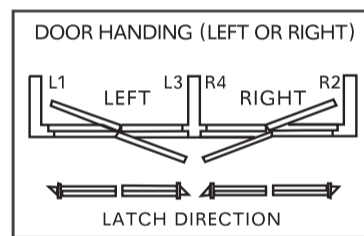


FIG 3

HD72ESL escape lock only. The split follower is handed. Determine the hand of the door as shown in Fig 3. Decide which side of the door you require the escape function. The escape side (inside) of the split follower has 2 screws see Fig 4A. To change the escape function to the opposite side, remove 1 screw and refit to the reverse side of the follower. Remove the 2nd screw and refit to the remaining hole on the reverse side of the follower. **IMPORTANT** Do not attempt to remove both screws at the same time

Fit the lock in the mortise without the outer faceplate and drill two fixing holes 2.5mm dia, 30mm deep and secure with the screws supplied.

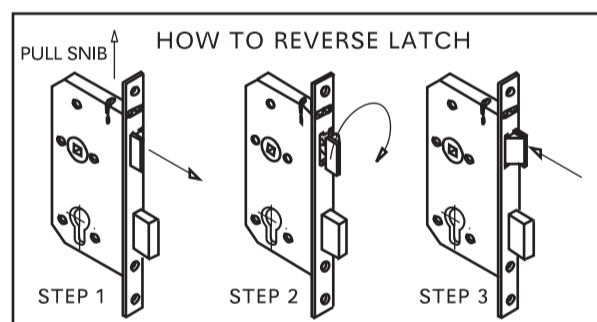


FIG. 4

Fixing the Strike Plate

To identify the correct height of the strike plate on the door frame throw the deadbolt and carefully mark the position of the latch and deadbolt with either tape or pencil, this will indicate what height the strike needs to be positioned. Allow 1-2mm clearance under the deadbolt.

Position the strike at this height and draw round so that the latch and deadbolt are aligned with the apertures in the strike, if the lock has a latch, the flat edge should be at rest on the edge of the aperture.

Mortise out to a 1mm depth so that the strike sits flush within the frame, draw the apertures and then place the splinter box over and draw round the splinter box/boxes. Mortise the frame to accept the splinter box.

Place the splinter box within the mortise then fit the strike plate over the top and position with the fixings supplied.

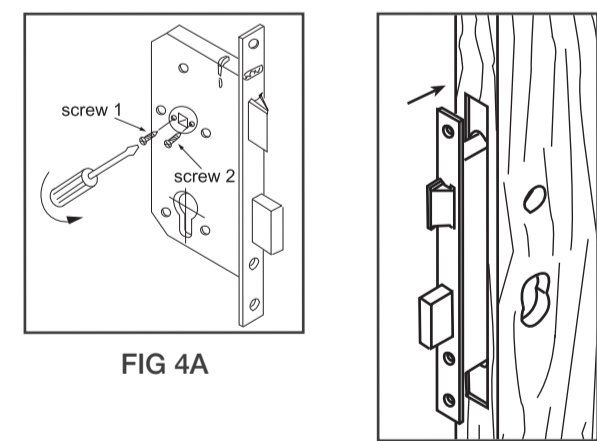


FIG 4A

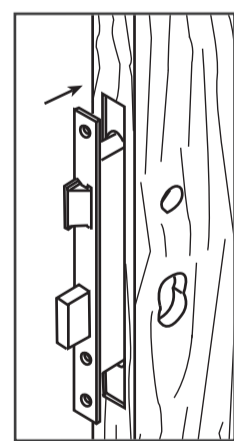


FIG 5

Operation

Finally, fit the door furniture*, cylinder escutcheons and operate the latch and the deadbolt with the door in the open position. Position the outer faceplate over the forend and secure with the 3 machine screws supplied. Ensuring the latchbolt is withdrawn close the door and check:

- Can the latch be operated by the handle
- Does the latch locate into the strike plate?
- Can the deadbolt be thrown smoothly by operating the cylinder with the key?

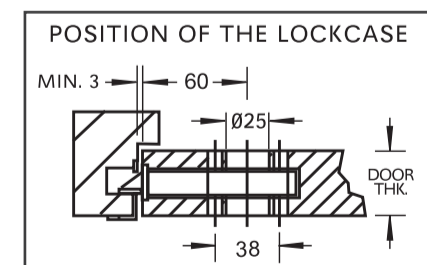


FIG 6

* HD72ESL is supplied with a split spindle
* HD72WC is supplied with a 5mm spindle adaptor

Important! Fire Doors!

When this lock is fitted to fire doors, it must be protected by intumescent material as follows:

Intumescent gasket pack for case and strike/lockplate:

- 0.8mm Graphite behind the strike/locking plate and 0.8mm Graphite around the case and behind the faceplate

Maintenance

Inspect regularly to ensure the lock case, strike/lockplates and faceplates are fixed securely to the door.

Apply a small amount of spray lubrication (not grease) and operate several times to ensure the deadbolt retracts fully.

Check the furniture is well fitted and in good working condition.

Ensure the handle fully retracts the latch as required. Or follow the furniture manufacturer's maintenance details.